



Fast screening tests to select biochars and the growing medium

J. Debode, E. De Keyser, L. Desmet, K. Maenhout, T. Eeckhaut, J. Viaene & B. Vandecasteele

Amount
of
biochars

Lab:
Fast
screening
pure
biochars



Pot:
interaction
with the
growing
medium



**Green-
house:**
demo

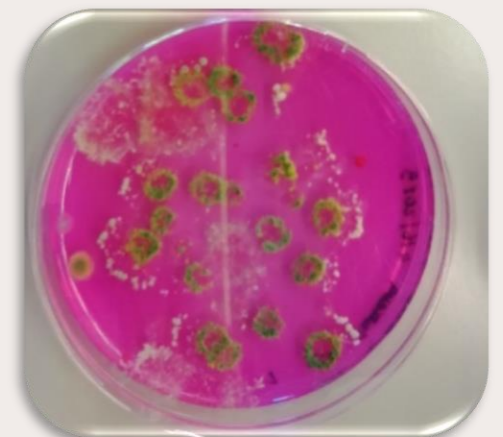
Mode of action?

**Strawberry cell
cultures to screen
for plant defense**



1. Cell cultures from strawberry callus + biochar
2. Expression of defense genes using qPCR

**Inoculation
to screen for
carrier biocontrol**



1. Incubation of biochars with *Trichoderma*
2. The colonisation efficiency



***Pythium*-cresson to screen for
disease suppressive growing media
constituents**



1. Growing media constituents & blends
2. Plant pathogen *Pythium* & cress
3. Cress germination, root development and fresh weight



Demonstration trials @PCFruit



1. Inoculation with *Trichoderma*
2. Disease suppression
3. Peat replacement